

FIRST FLOOR LEVEL PLAN



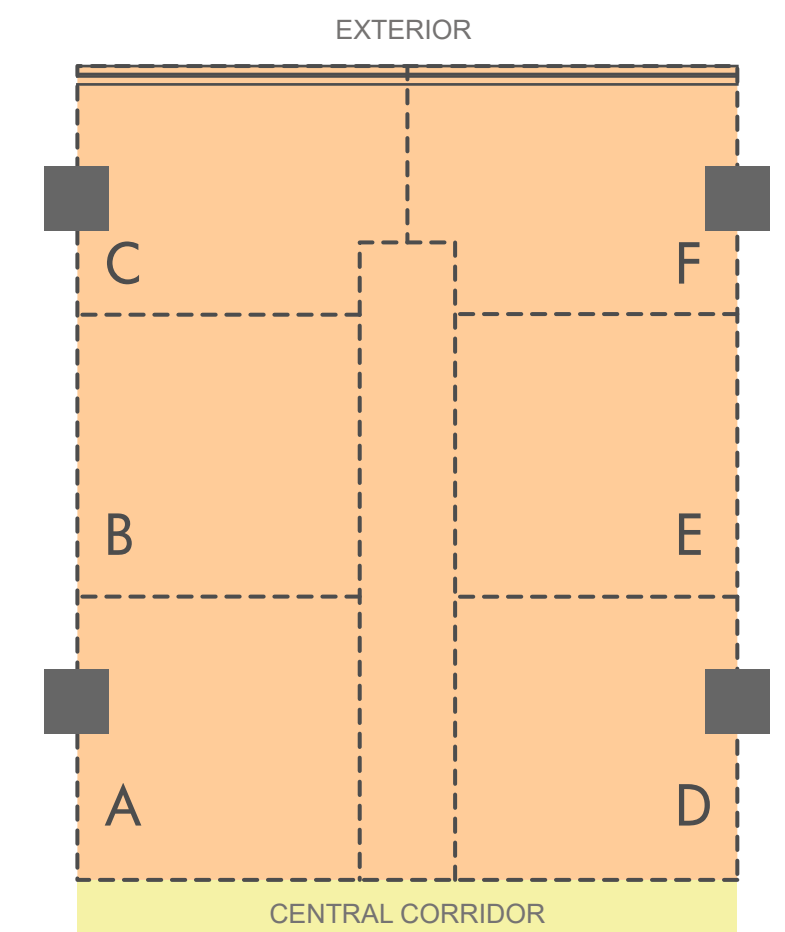
2nd to 5th, 8th & 9th FLOOR LEVEL PLAN



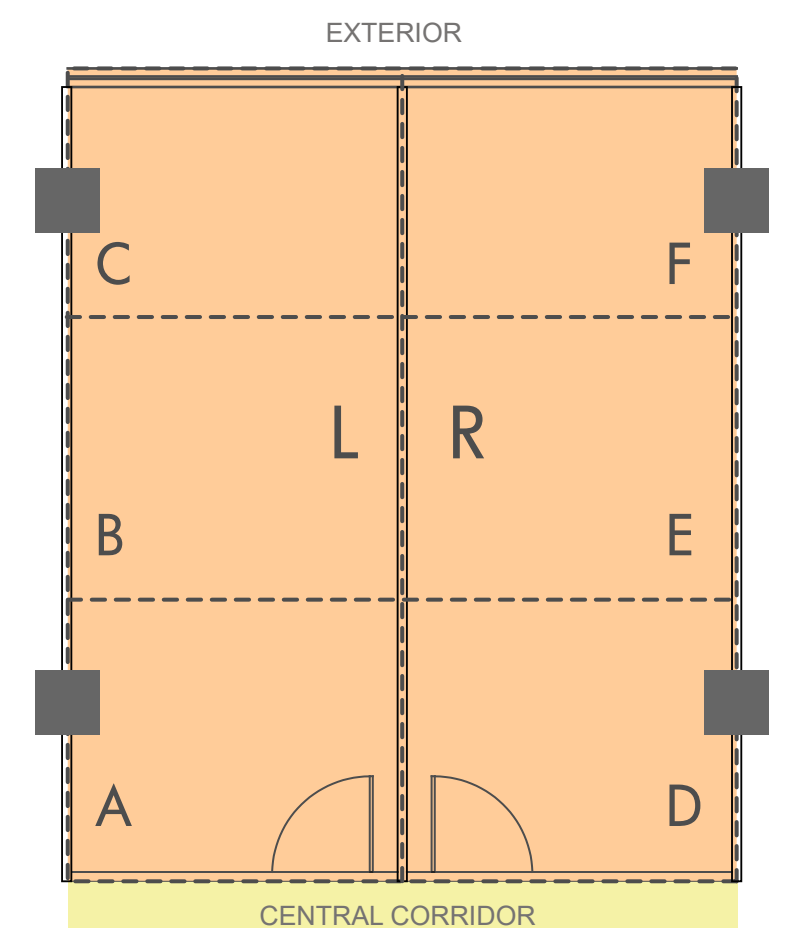
6th, 7th & 10th FLOOR LEVEL PLAN



### TYPICAL MANAGED FLOOR BLOCK CONFIGURATION



### TYPICAL SELF-USE FLOOR BLOCK CONFIGURATION



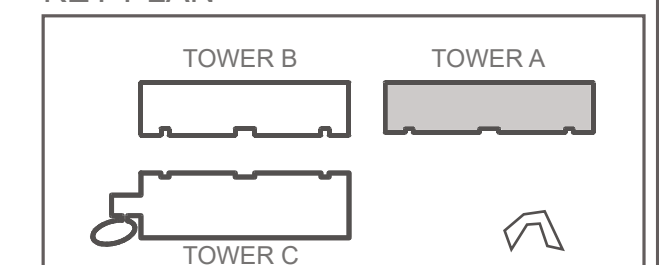
# Tower A

## Office Spaces

-All non-lockable units, demarcation of Unit shown in this Layout plan will not exist at Site

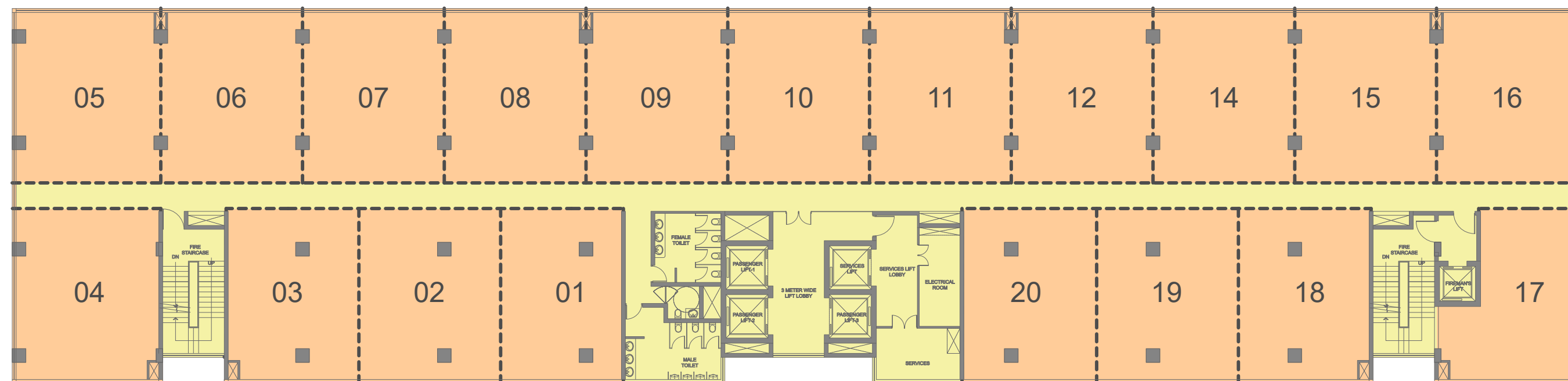
Project Name: WTC Noida-CBD. Project Location: A-02/1, Sector 132, Noida, District Gautam Budh Nagar, UP. RERA Registration No. UPRERAPRJ17623.  
Promoter: WTC Noida Development Company Private Limited; CIN No. U70109DL2007PTC162288.  
Co-Promoter: August Residency Private Limited; CIN No. U45200DL2008PTC176502. Contact Address: GF - 09, Plaza M-06, District Centre, Jasola, New Delhi-110025.  
Trade Marks: "World Trade Center", "WTC", WTC Logo are owned by "World Trade Centers Association, Inc, New York (WTCA)". Promoter is using said trademarks and logo under License from WTCA.  
General Disclaimer of Liability - The content published / printed herein are not any sort of invitation, legal offer or promise from the company. All representations / presentations made herein are for illustrative / indicative purpose and not claimed to be exhaustive or complete. This contains artistic impressions and no warranty is expressly given or implied that the completed development will comply in any degree with such artist's impression as depicted. All specifications/ layout of the unit shall be as per the final agreement between the parties. Please refer to the booking application and agreement of the project issued by the developer for detailed pricing and terms & conditions before making a decision of purchase. Company shall not be responsible for any liability arising from information provided on any other website/ communication or through any third party interests. The official website of the Project is [www.wtcnoidacbd.org](http://www.wtcnoidacbd.org).  
1 sq. ft. = 0.093 sq. m.

### KEY PLAN





FIRST FLOOR LEVEL PLAN

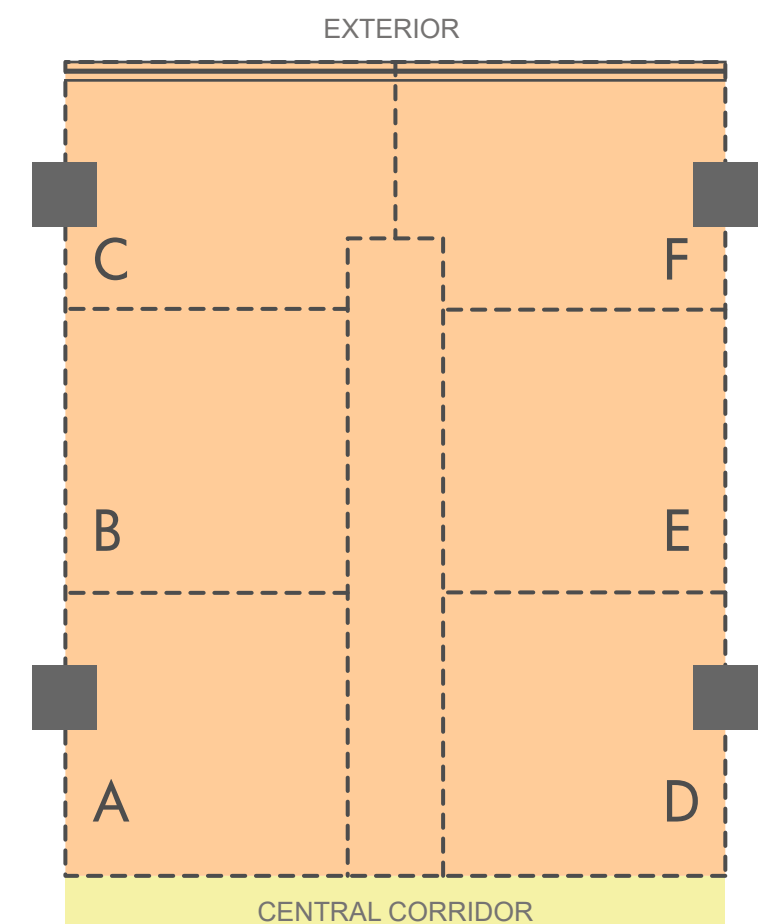


2nd to 5th, 8th, 9th & 12th FLOOR LEVEL PLAN



6th, 7th, 10th & 11th FLOOR LEVEL PLAN

### TYPICAL MANAGED FLOOR BLOCK CONFIGURATION



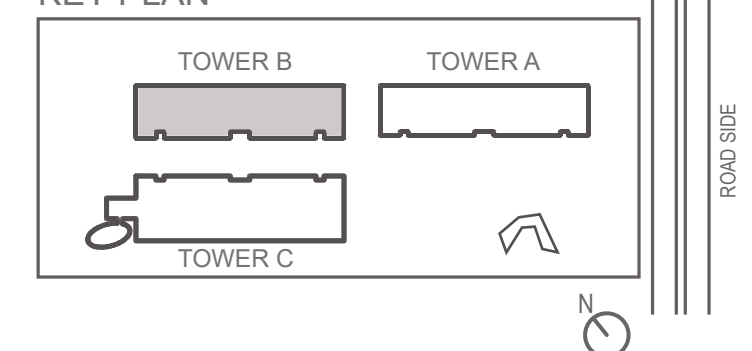
# Tower B

## Office Spaces

-All non-lockable units, demarcation of Unit shown in this Layout plan will not exist at Site

Project Name: WTC Noida-CBD. Project Location: A-02/1, Sector 132, Noida, District Gautam Budh Nagar, UP. RERA Registration No. UPRERAPRJ17623.  
Promoter: WTC Noida Development Company Private Limited; CIN No. U70109DL2007PTC162288.  
Co-Promoter: August Residency Private Limited; CIN No. U45200DL2008PTC176502. Contact Address: GF - 09, Plaza M-06, District Centre, Jasola, New Delhi-110025.  
Trade Marks: "World Trade Center", "WTC", WTC Logo are owned by "World Trade Centers Association, Inc, New York (WTCA)". Promoter is using said trademarks and logo under License from WTCA.  
General Disclaimer of Liability - The content published / printed herein are not any sort of invitation, legal offer or promise from the company. All representations / presentations made herein are for illustrative / indicative purpose and not claimed to be exhaustive or complete. This contains artistic impressions and no warranty is expressly given or implied that the completed development will comply in any degree with such artist's impression as depicted. All specifications / layout of the unit shall be as per the final agreement between the parties. Please refer to the booking application and agreement of the project issued by the developer for detailed pricing and terms & conditions before making a decision of purchase. Company shall not be responsible for any liability arising from information provided on any other website/ communication or through any third party interests. The official website of the Project is [www.wtcnoidacbd.org](http://www.wtcnoidacbd.org).  
1 sq. ft. = 0.093 sq. m.

### KEY PLAN

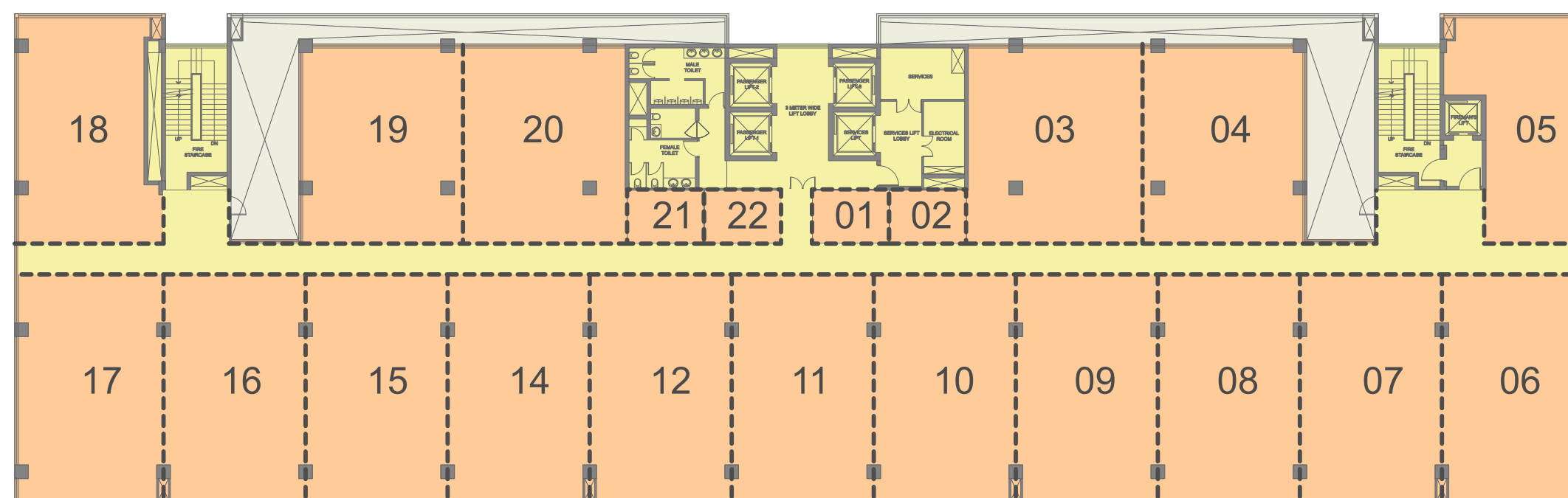




FIRST FLOOR LEVEL PLAN



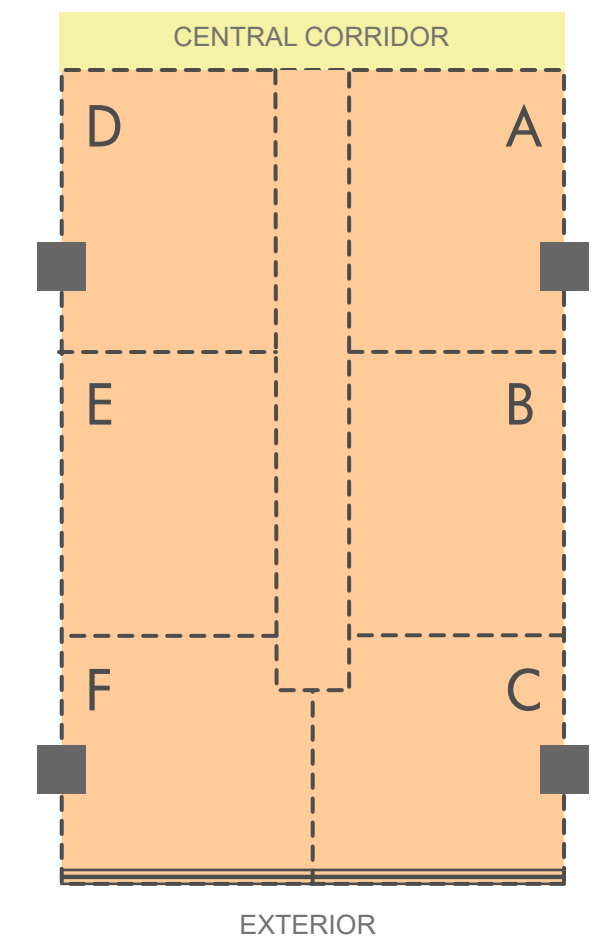
2nd to 5th, 8th, 9th & 12th FLOOR LEVEL PLAN



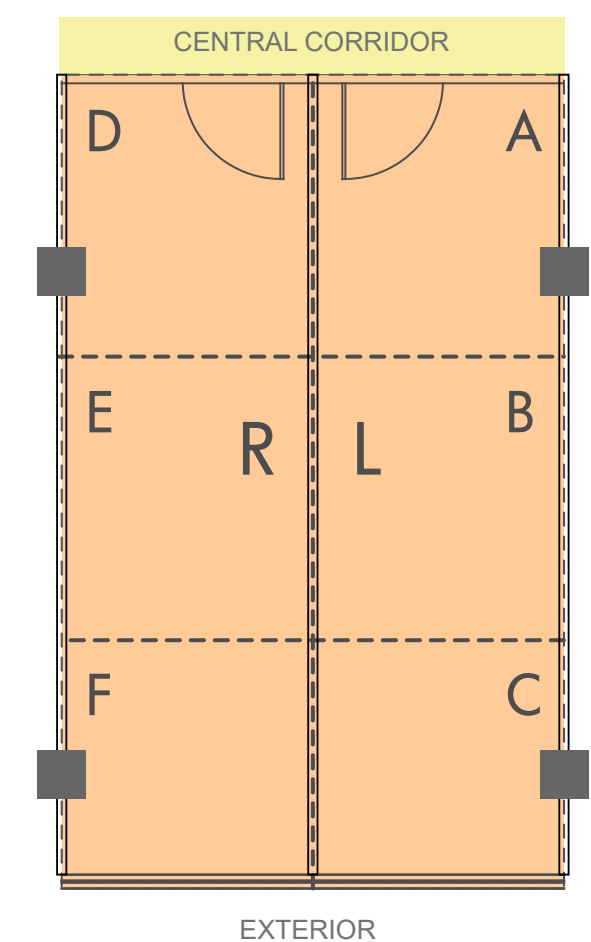
6th, 7th, 10th & 11th FLOOR LEVEL PLAN



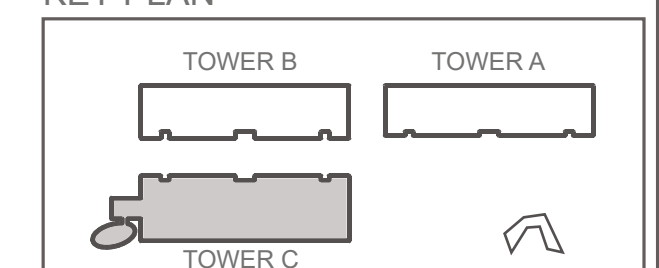
### TYPICAL MANAGED FLOOR BLOCK CONFIGURATION



### TYPICAL SELF-USE FLOOR BLOCK CONFIGURATION



### KEY PLAN



# Tower C

## Office Spaces

-All non-lockable units, demarcation of Unit shown in this Layout plan will not exist at Site

Project Name: WTC Noida-CBD. Project Location: A-02/1, Sector 132, Noida, District Gautam Budh Nagar, UP. RERA Registration No. UPRERAPRJ17623.  
Promoter: WTC Noida Development Company Private Limited; CIN No. U70109DL2007PTC162288.  
Co-Promoter: August Residency Private Limited; CIN No. U45200DL2008PTC176502. Contact Address: GF - 09, Plaza M-06, District Centre, Jasola, New Delhi-110025.  
Trade Marks: "World Trade Center", "WTC", WTC Logo are owned by "World Trade Centers Association, Inc, New York (WTCA)". Promoter is using said trademarks and logo under License from WTCA.  
General Disclaimer of Liability - The content published / printed herein are not any sort of invitation, legal offer or promise from the company. All representations / presentations made herein are for illustrative / indicative purpose and not claimed to be exhaustive or complete. This contains artistic impressions and no warranty is expressly given or implied that the completed development will comply in any degree with such artist's impression as depicted. All specifications/ layout of the unit shall be as per the final agreement between the parties. Please refer to the booking application and agreement of the project issued by the developer for detailed pricing and terms & conditions before making a decision of purchase. Company shall not be responsible for any liability arising from information provided on any other website/ communication or through any third party interests. The official website of the Project is [www.wtcnoidacbd.org](http://www.wtcnoidacbd.org).  
1 sq. ft. = 0.093 sq. m.